

To manage your materials and chemicals components data, and to comply with your Federal, state and local Tier reporting requirements, consider the following MIRS<sup>TM</sup> solutions:

## SARA

stand-alone module

The SARA module provides Title III Section 302, 304, 311 & 312 compliance with reporting for Tier I, Tier II, MSDS chemical list, emergency release (spill) notification, and emergency planning.

**Federal Tier II magnetic media submission:** generates file with Tier II report data in EPA format, ready for direct submission.

SARA features an **Import function** to add or update product information from other company systems, to reduce data entry.

**Detailed chemical database:** includes all Title III Section 312 chemicals with chemical data and legislative status.

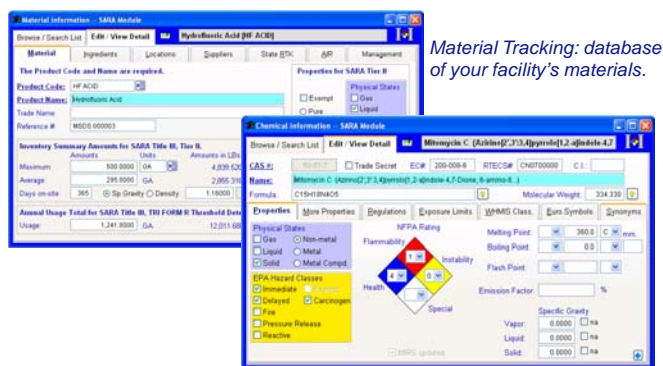
**Extensive components tracking:** tracks up to 99 chemical components per product.

**Hyperlink to agency, manufacturer and supplier** web sites for quick access to information.

**Powerful search function:** quickly and easily locates chemicals and materials using the full or partial CAS #, full or partial chemical / material name.

**Automatic unit conversion:** converts into EPA-required "pounds" for reporting.

**Other company reports:** generates many other reports for internal management of your facility's chemical inventory, using various query criteria, such as manufacturer, chemical location or inventory dates.



*Regulated Chemical database: the chemicals that make up those materials. Information includes regulatory list status, reportable quantity, EPA hazard classes & more.*

## LOCAL

add-on module

SARA module is required for this add-on module

The LOCAL module provides State / LOCAL Tier reporting, addressing selected reporting variations from the EPA.

**Choice of specific implementations:** California, Delaware, Florida, Kansas, Louisiana, Michigan CMR, Wastenaw County (Michigan), Minnesota, New Jersey, Ohio, Texas, Wisconsin, etc.

**Generic option** lets you specify templates for other regional reporting.

## CLE (Chemical List Extension)

add-on module

**Greatly expands the SARA module chemical database for identifying and cross-checking multiple agency lists.**

The more than 150,000-chemical strong database covers 60+ regulatory lists (CAA incl. HAPs and GHG, CWA, TSCA, ODC, NJ, PA, MI, CA, incl. Prop 65, etc.)

**Quick payback:** save data entry time for chemicals already in the database.

CLE is required for all LOCAL add-on modules

## INVENTORY

add-on module

SARA, FORM R, or MSDS is required for this add-on module

**"Real time" chemical inventory tracking by location or container:** tracks transactions by location for physical inventory, purchase, usage and inventory transfers. There is an alternative version for tracking amount by container.

**Inventory calculations:** calculates usage, average and maximum quantities for any specified period of time.

**Year-to-date reports:** generates year-to-date inventory level reports and projects reportable chemicals based on annualized amounts.

**Year-end reporting:** generates material summaries and integrates with other MIRS<sup>TM</sup> modules for year-end Tier, Form R and other compliance reporting, with automatic inventory unit conversion to "pounds".

### Other Modules available for use with MIRS<sup>TM</sup>

Stand-alone:

SARA Module  
MSDS Module  
FORM R Module  
AIR Module  
NPDES Module  
WASTE Module  
PERMIT Module

Add-on:

CHEMICAL LIST EXTENSION (CLE) Module  
INVENTORY (location) Module  
INVENTORY (container) Module  
MSDS HAZCOM Module  
MSDS NETVIEW Module  
MSDS DISTRIBUTION Module  
LOCAL Module  
RCRA TRAINING Module  
TASK MASTER Module  
CORPORATE-MIRS

Popular packages:

SARA Title III Package  
Worksafe Package  
Releases Package

**LET MIRS<sup>TM</sup> TAKE THE HAZARD OUT OF YOUR EH&S COMPLIANCE!**